



# Aādhyā

By

EESHANYA CONSTRUCTIONS

## 4 BHK INDEPENDENT VILLAS PROJECT



Chinnamettupalayam





# ABOUT EESHANYA



"Trust the Experts in Luxury Living & Quality Construction - Eeshanya Group: Coimbatore & Hyderabad's Premier Property Developer since 2012. Building communities that exceed expectations with exceptional service and global engineering excellence."







# Completed Project

## White Meadows

Eeshanya White Meadows is one of the luxurious villa projects in Vellakinar, Coimbatore that offers 15 fully constructed luxury villas in a residential setting spread across a 1-acre plot of DTCP approved land.



2



# Ongoing Project

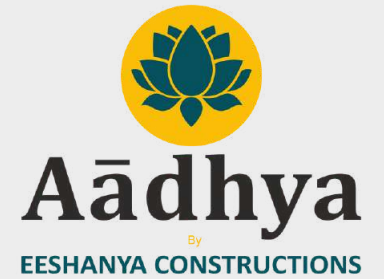
## Eeshanya Tropique

Eeshanya's Tropique –an exquisite 3 BHK Villa project located in Saravanampatti. This project boasts 40 lavish villas, each designed to offer an unparalleled living experience, Tropique is designed to set a new benchmark for luxury villas in Coimbatore.

**Tropique Walk Through Video:**

<https://youtu.be/NNcmzQDcbok>





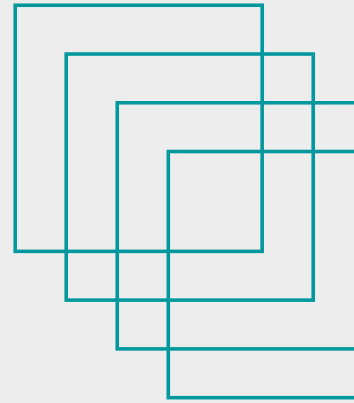
# ABOUT AADHYA



"Discover the pinnacle of luxury living in Chinnamettupalayam, Coimbatore. Immerse yourself in meticulously crafted 4 BHK villas, offering opulence, elegance, and unrivaled comfort. Prime location and exclusive club house amenities complete the extraordinary experience!"







**North**  
Facing **11** Villas

**South**  
Facing **10** Villas

**Total** **21** Villas





# LAYOUT AERIAL VIEW





# LAYOUT MAP



60ft Road Towards Athipalayam



SITE NO	SITE FACING	LENGTH	BREADTH	TOTAL CENTS	BUILD-UP AREA
1	CLUB HOUSE	-	-	-	CLUB HOUSE
2	SOUTH	34	41	3.20	2240
3	SOUTH	34	41	3.20	2240
4	SOUTH	34	41	3.20	2240
5	SOUTH	34	41	3.20	2240
6	SOUTH	34	41	3.20	2240
7	SOUTH	34	41	3.20	2240
8	SOUTH	34	41	3.20	2240
9	SOUTH	34	41	3.20	2240
10	SOUTH	34	41	3.20	2240
11	SOUTH	39.75	42	3.83	2240

SITE NO	SITE FACING	LENGTH	BREADTH	TOTAL CENTS	BUILD-UP AREA
12	NORTH	38.35	43	3.78	2220
13	NORTH	34	43	3.35	2220
14	NORTH	34	43	3.35	2220
15	NORTH	34	43	3.35	2220
16	NORTH	34	43	3.35	2220
17	NORTH	34	43	3.35	2220
18	NORTH	34	43	3.35	2220
19	NORTH	34	43	3.35	2220
20	NORTH	34	43	3.35	2220
21	NORTH	34	43	3.35	2220
22	NORTH	34	43	3.35	2220

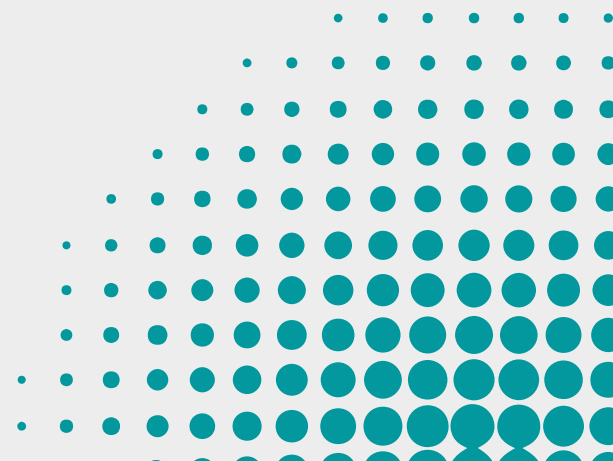




# North Elevation



Stay comfortable with natural shading and reduced heat and Invite prosperity in your life with North Facing 4 BHK Villas in Aadhya.







**NORTH  
FACING**



# Uttar. North Facing

Plot Area: 3.35 Cents

Built-up Area: 2220 sft

## FLOOR PLAN







# South Elevation

Embrace the Warmth of Sunlight, Cozy Winters, and an Exclusive Skylight Option. Experience Unmatched Luxury in Aadha's South-facing Villas with East Main entrance.





# **SOUTH FACING**



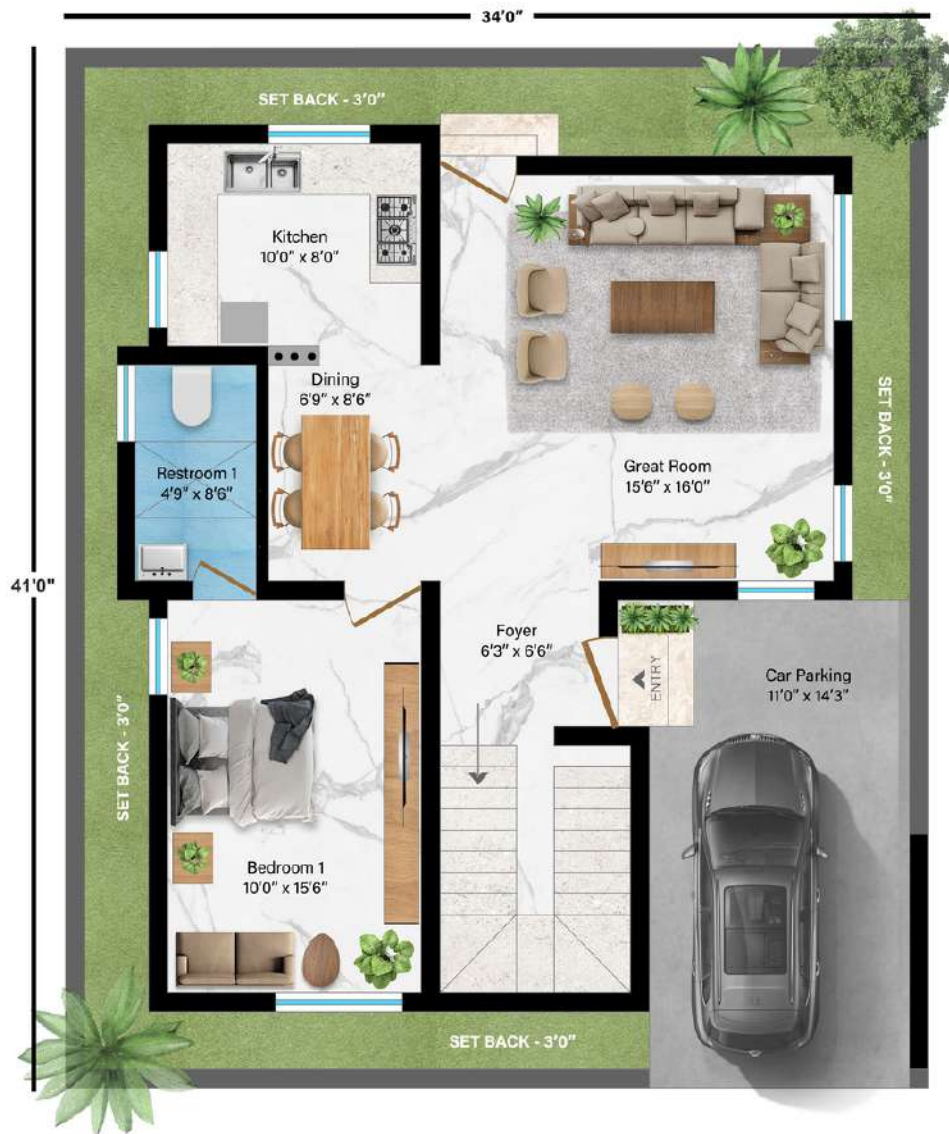


# Dakshin. South Facing

Plot Area: 3.20 Cents

Built-up Area: 2240 sft

## FLOOR PLAN







# GRAND ARCH

"Experience a secure Community with a grand arch and round-the-clock security. Our fully compounded luxury 4 BHK villas in Aadhya ensure your peace of mind and tranquility."





# CLUB HOUSE

---

"Experience Aadha's Clubhouse with Gym, Indoor Play Area, Outdoor Play Area and Shops. Elevate your lifestyle with exclusive amenities designed for fitness and fun."







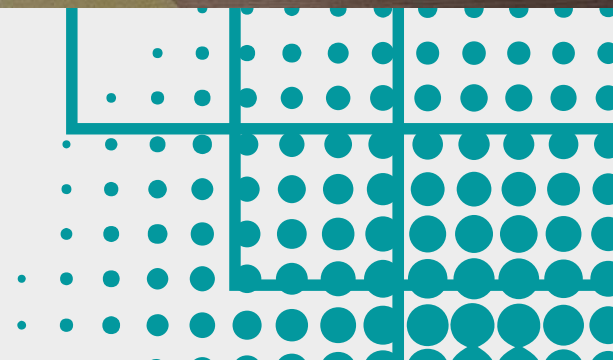
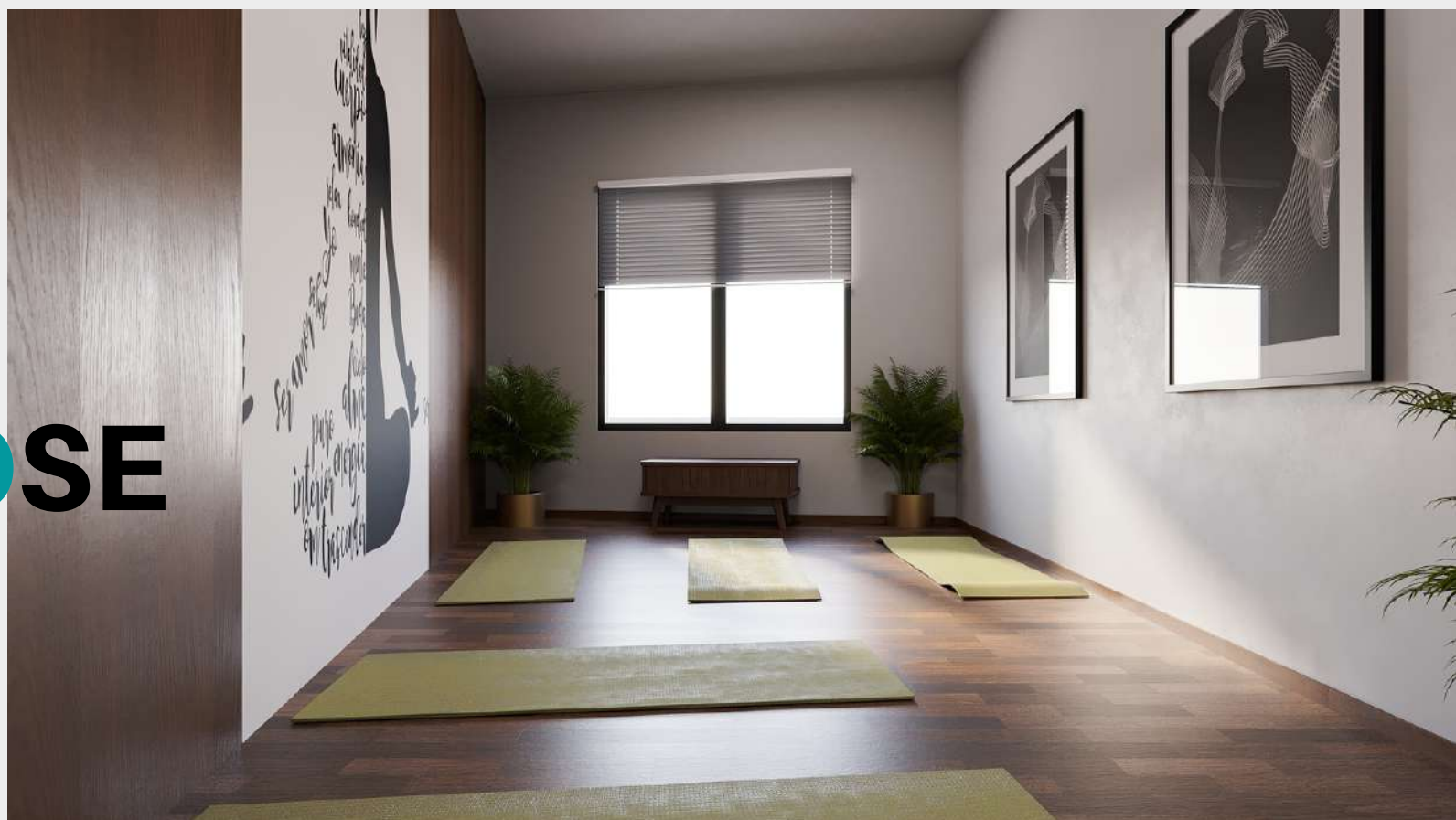
# GYM ROOM





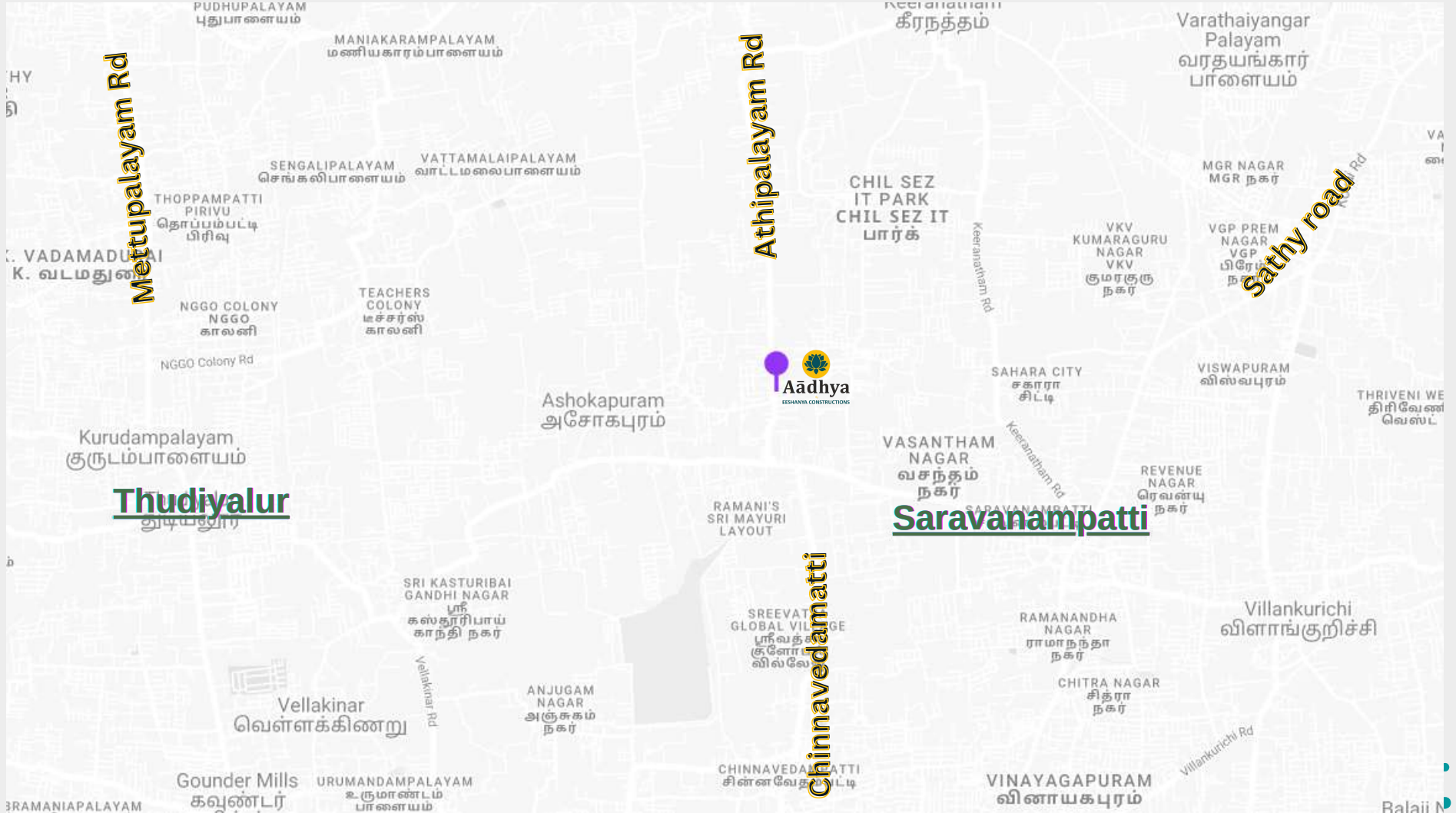


# MULTI PURPOSE HALL





# LOCATION MAP



[Click here for google map](#)





# For site Visit

---



**96559 12777**

**96559 11771**



1st Floor, Above Naturals Saloon,  
Saravanampatti, Coimbatore.

